

CleMate 400 Fiber Cleaner

Features

- Designed for all kinds of simplex connectors
- Compact sized for instant hand-held operation
- Fabric Dry-cleaning without volatile residues and harmful substances
- Replaceable cartridge
- Guaranteed no residues and scratches on the connector tip
- Made with anti-static material

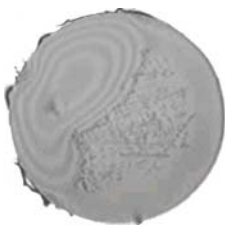


The CleMate 400 Fiber Cleaner is designed in the way of handy operation. It is so compact that it can be gripped in hand. By pressing down the red button, the cover slides open leaving the clean weave ready to clean the connector. It is a revolutionarily designed packet-sized cleaner that fits the movement of our hands and can be portable anywhere. Also its anti-static materials can keep dust and particles away from your connector.

A used fabric cartridge can be easily deposed and replaced with a new one. Owing to the super fine cross-woven fabric, the CleMate 400 offers the dry-cleaning solution that will not cause residual liquid, which leads to improper connection. Also, with two-wipes of the cleaner, all kind of dirty particles, such as dust, dripping, moist, and alcohol residues can be removed completely and the connection performance improved significantly.

Cleaning Result

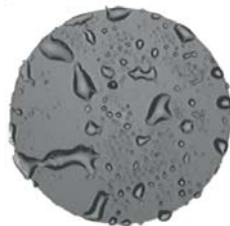
The following are the images of the connector tip.



Stained by
Isopropyl Alcohol



Stained by
Dust and Particles



Stained by
Hand Dripping



Impeccably cleaned
by CleMate 400

Easy to Use



Step 1.

Press the trigger of tape carrier to open the cover, and you'll see two cleaning slots.



Step 2.

Insert and press down the connector to the top of slot, slowly slide the connector down. Raise and rotate the connector in 90-degree, and move to the other slot. Repeat the same process above in this step.



Step 3.

After cleaning, release the trigger and close the cover.

Easy to Replace



Step 1.

Use a flat screwdriver or a coin to loosen the screws on the tape carrier.



Step 2.

Remove the used Cartridge and install a new one properly according to the guiding edge of the carrier.



Step 3.

Use a flat screwdriver or a coin to tighten the screws.

Specifications

Model	CleMate 400A	CleMate 400B
Cleaning Capacity	400 wipes	
Cleaning Window	2 slots	1 open-window
Applying Connector	2.5mm : FC, SC, SC2, ST 1.25mm: MU, LC	MPO, MT (specify when order)
Dimension (mm)	134(L) x 100 (W) x 36(D)	
Weight	< 130g	

Ordering Information

CleMate 400-

A: for 2.5/1.25mm connector
B: for MPO/MT connector

Refill Cartridge -

A: for 2.5/1.25mm connector
B: for MPO/MT connector

